

Postdoctoral Scholar (PX) New Employee Orientation

UCSC Employment Overview



Land Acknowledgement

An aerial photograph showing a campus with several buildings, including a prominent blue and white structure, situated in a valley. The campus is surrounded by lush green fields and a dense forest of tall trees. In the background, rolling hills are visible under a clear sky.

The land on which we gather is the unceded territory of the Awaswas-speaking Uypi Tribe. The Amah Mutsun Tribal Band, comprised of the descendants of indigenous people taken to missions Santa Cruz and San Juan Bautista during Spanish colonization of the Central Coast, is today working hard to restore traditional stewardship practices on these lands and heal from historical trauma.

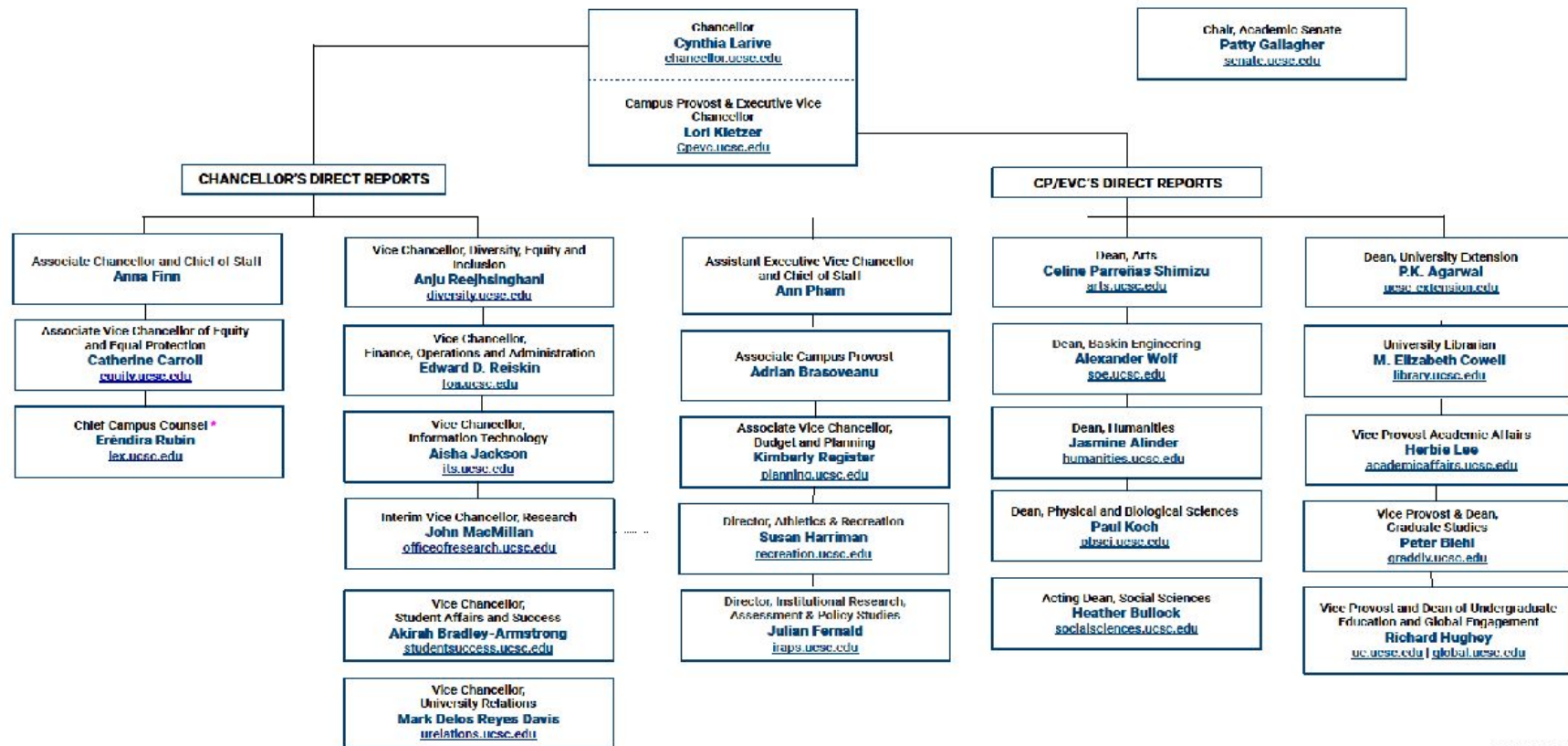
Executive Leadership



Chancellor, [Cynthia Larive](#)



Campus Provost & Executive Vice
Chancellor, [Lori Kletzer](#)



POSTDOCTORAL BENEFITS

Newly appointed Postdocs have 31 days from their appointment start date to enroll in benefits.

Recommended Viewing:

[Video Overview of the UC Postdoc Benefit Plan](#)

Please [click here](#) to download the 2023 Benefit Program Guide.

Divisions & Colleges

Academic Divisions

- [Arts](#)
- [Baskin Engineering](#)
- [Humanities](#)
- [Physical & Biological Sciences](#)
- [Social Sciences](#)

[Undergraduate Colleges](#)

- Cowell
- Stevenson
- College Nine
- John R. Lewis
- Rachel Carson
- Kresge
- Oakes
- Crown
- Merrill
- Porter

<https://www.ucsc.edu/academics/index.html>

Postdoctoral Scholar Support

- Besides your academic division, the [The Division of Graduate Studies](#) serves both postdoctoral scholars and graduate students.
- Career and Professional Development activities are available to postdocs through the Graduate Division.
- For assistance on postdoc issues, you can reach out to Vice Provost and Dean of the Division of Graduate Studies [Peter Biehl](#), Associate Dean of Graduate Studies and Postdoctoral Affairs [Don Smith](#), and Professional Development Coordinator [Sonya Newlyn](#).

Campus Systems & Resources

- [Getting Started at UCSC](#) (General employment resources)
- [CruzID](#)
- [Google Core Apps](#)
- [Wifi](#) - eduroam or UCSC Guest
- [UCnet](#) - Portal to UCPATH, UCRAYS, and Fidelity
- [UCPATH @ UCSC](#)
- [UC Learning Center](#) - Training

Information Technology Services (ITS)

If you have any tech support questions, ITS is there for you.

[IT Services for New Employees](#)

[Remote Working Resources](#)

- Open a Ticket
- 831-459-HELP
- help@ucsc.edu



Principles of Community

Diverse: We embrace diversity in all its forms and we strive for an inclusive community that fosters an open, enlightened and productive environment.

Open: We believe free exchange of ideas requires mutual respect and consideration for our differences.

Purposeful: We are a participatory community united by shared commitments to: service to society; preservation and advancement of knowledge; and innovative teaching and learning.

Caring: We promote mutual respect, trust and support to foster bonds that strengthen the community.

Just: We are committed to due process, respect for individual dignity and equitable access to resources, recognition and rewards.

Disciplined: We seek to advance common goals through reasonable and realistic practices, procedures and expectations.

Celebrative: We celebrate the heritage, achievements and diversity of the community and the uniqueness and contributions of our members.



UC SANTA CRUZ

UC Vaccination Policy

New employees are expected to comply with the UC's Vaccination Policies.

- COVID-19 Information
 - [COVID-19 Vaccination and Booster Requirements](#)
 - [Local options](#) for getting a vaccine appointment
 - [Instructions](#) for uploading proof of vaccination
 - Log into Health e-Messenger and navigate to the 'Medical Clearances' tab. Next to 'COVID-19', click on the green 'Update' button. When the pop-up opens, upload a photo of your vaccination card and select 'Add Immunization' with the date and type of vaccine you received. Click 'Done' and the information will be saved.
 - [Stay Up to Date with COVID-19 Vaccines](#) (CDC)
 - Employee Vaccination [Exception Form](#)
 - [UC-wide policy on vaccinations](#)
 - [COVID-19 care and testing](#) (Student Health Center site includes information for employees)

Ergonomic Safety

ErgoCruz is a comprehensive preventive office/computer ergonomics program offered by UCSC Safety, Wellness, and Injury Management, offering training, resources and support to UCSC employees.

Ergonomic self-assessment



Campus Support Offices

- Reasonable accommodations: Disability Management Consultants
 - Kelly Roberts, Disability Management Services Manager (roberts@ucsc.edu)
 - David Ritz, Disability Management Coordinator (dritz@ucsc.edu)
- [Office for Diversity, Equity, and Inclusion](#)
 - [Equal Employment Opportunity](#)
 - [Affirmative Action](#)
- [Title IX Office](#)

Getting Around Campus

- [Vanpool Program](#)
- Buses and Shuttles
 - [Reduced Fee Bus Pass](#)
 - [Bike Shuttle](#)
- Bike Program
 - [SlugBikeLife](#)
 - [0% Bike Loan](#)
- Carpool = [CRUZ511](#)
- Parking = [Parking Lot Map](#)
 - [Parking Permits](#)
- [Emergency Ride Home Program](#)
- [Maps](#)



Learning & Development

- **Self-paced learning**
 - [UC Learning Center](#)
 - [LinkedIn Learning](#)
 - [UC Learning Center](#)
 - [Academic Impressions](#)



Diversity, Equity & Inclusion Committees & Initiatives

- UC Santa Cruz is committed to working with all campus partners to identify mechanisms to dismantle structural racism, and to meaningfully address the impacts of bias.
- UC Santa Cruz has an array of exemplary projects and events that showcase the community's dedication to diversity, equity, inclusion and antiracist efforts.



Diversity & Inclusion Certificate Program

- The DICP provides an in-depth examination of diversity and differences in order to gain a greater understanding of how we can work together to build a stronger and more inclusive community.
- Some topics covered include:
 - Queer & Trans Identities & Communities
 - Coming to Terms with our Differences
 - Disability 101
 - Race: A Brief History of an Idea
- Program includes 8 courses, with a presentation session where program graduates will apply the knowledge gained in the program to their work on campus.



Sustainability Certificate Program

- This program examines sustainability through multiple lenses to develop knowledge and strategies for building a more inclusive and sustainable campus.
- Some topics that are covered include:
 - Understanding Zero Waste
 - Fostering Sustainable Behavior
 - Climate Justice
- Current staff, faculty, and graduate students are eligible to participate.



Summer Session

Academic appointees may be eligible* to receive 50% off tuition

*Academic appointees who have worked at least 50% time for 6 months or more.

UCSC academic and staff employees are encouraged to pursue professional and personal development. You do not need to be in a degree-seeking matriculated program to take Summer Session.



Rec Center & FitLife

- Academic and staff employees receive a discounted membership to the rec center on campus
- [FitLife](#) has a variety of virtual fitness classes



Faculty and Staff Wellness Program

Integrated programs and services designed to provide tools and skills for leading healthy lifestyles and preventing injury and illness.

- [Support Groups](#)
- [Diabetes Prevention Program](#)
- [UC Living Well](#)
- [Wellness Workshops](#)



Tuesday Newsday is the weekly campus newsletter, delivered by email on Tuesdays to faculty, staff, and students. The publication provides an easy way for the campus community to learn about research success, student achievement, campus announcements, and more.



The researchers will test their novel photonics devices at Lick Observatory.

Engineering and astrophysics collaboration will develop cutting-edge spectrometers-on-a-chip

Kevin Bundy and Holger Schmidt seek to advance spectrometers-on-a-chip technology, which they believe will not only enable advances in astronomy when used as part of telescope instrumentation, but can be leveraged for a wide variety of applications across other fields.

COMMUNITY SUPPORT



Deeply troubled by DACA ruling

Additional Resources

- [Campus Conflict Resolution Services \(CCRS\)](#)
 - Professional consultation, mediation and training
- [Family Support Resources](#)
 - Membership to Bright Horizons, a network of family support providers
- [Employee Discounts](#)

